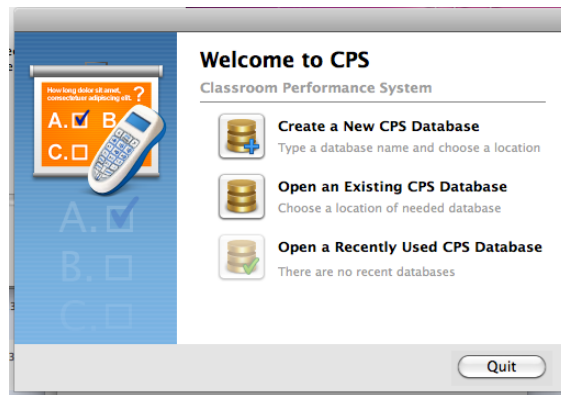
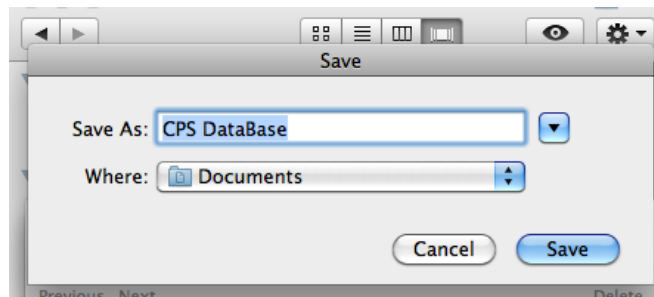


The training I'm providing is very similar to the videos found in the second link at the end of this document. If you prefer, you can choose to view the Windows version of the videos.

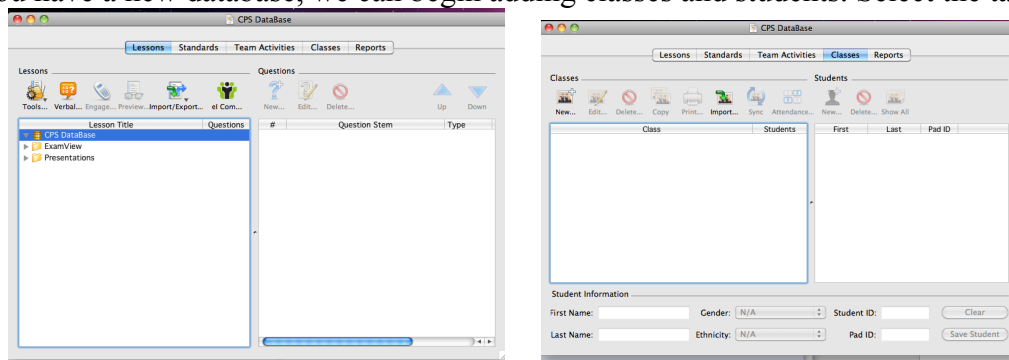
For those of you who need a step-by-step directions, please follow along here as I model the steps.



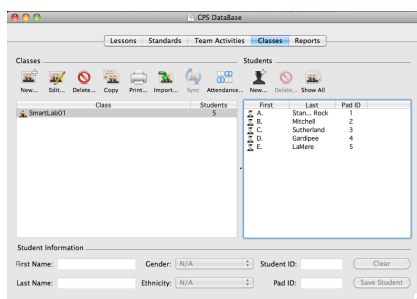
Because we're new to CPS, we'll choose to create a new CPS database. By default this will create a new folder. Make a note of where the new CPS Database folder is located.



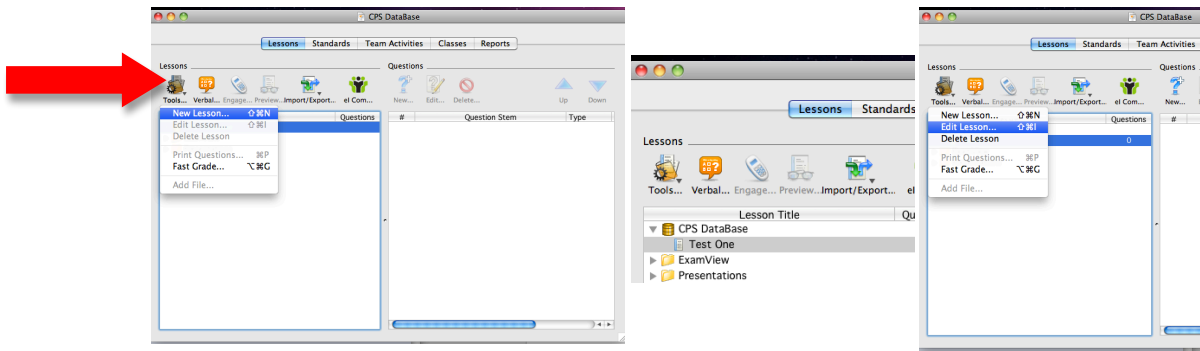
Now that you have a new database, we can begin adding classes and students. Select the tab "Classes."



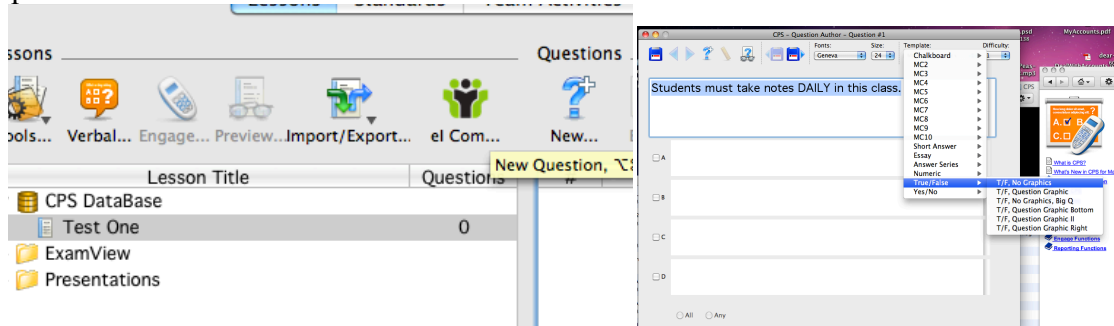
As you add students, you will see their names appear in the right window. Each student is assigned a remote number, so put them in randomly to keep their identity hidden from one another.



Now that you have students, you are ready to begin adding lessons to your class. Select "New Lesson." Next, select "Edit Lesson" to begin adding questions.



Choose “New Question.” The window on the right will appear so you can begin typing in your questions.



Links to  eInstruction® Simple Solutions. Real Results. training.

<http://www.einstruction.com/programs/product-training> - Click here to choose which training you would like to view.

http://mktgdev.einstruction.com/support_downloads/training/cps_mac/index.html - Macintosh support videos. Nicely done.

<http://www.einstruction.com/support/downloads>